

Career and experience portfolio

of

Mr Maurice Raymond Webb
Project Director

Chartered Professional within The Built Environment

Fellow Chartered Institute of Building

Fellow Chartered Quality Institute

Chartered Quality Professional

Affiliate of the Institute of Safety and Health



Fellow Chartered Institute of Building (Ambassador and Past Centre Chairman)
Fellow Chartered Quality Institute
Chartered Quality Professional
Affiliate Institution of Occupational Safety and Health

Maurice has worked extensively in the building and construction sector for 39 years to become a senior professional consultant working in a design, engineering and project management practice. Maurice has also achieved chartered professional status in the built environment, quality, safety and process systems management.

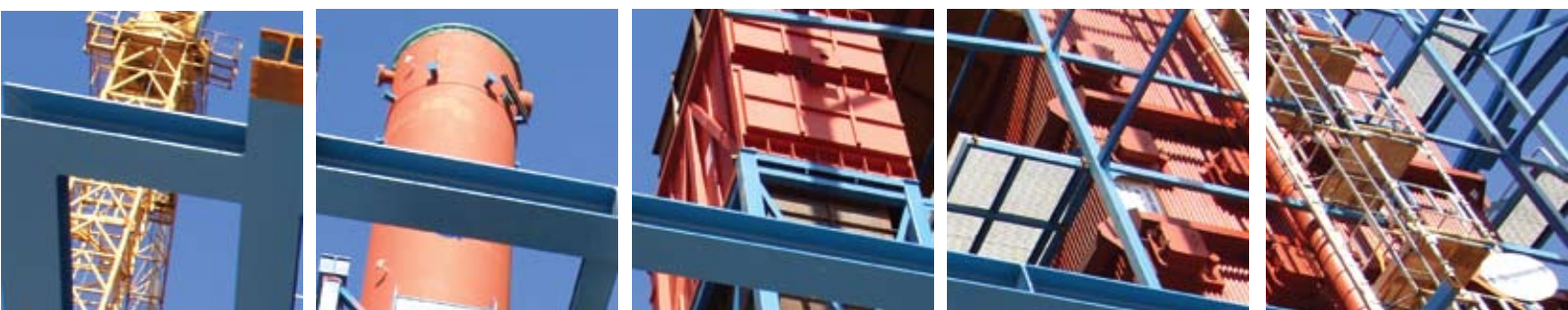
Working with, and leading a multi-discipline team Maurice has successfully delivered projects in the public and private sectors including specialised complex laboratory and research developments.

Working with local authorities Maurice has completed the delivery of a major town centre public realm regeneration programme.

Currently Maurice is engaged on a major hotel development in Asia, the delivery of a new restaurant (420 covers) and facilities management projects including health and safety initiatives in the built environment.

Contact details

Office: 00 (44) 1702 340 840
Mobile Phone: 07760 77 13 72
e-mail: mauricewebb@rswpartnership.co.uk
web site: www.rswpartnership.co.uk



Career

Maurice's career commenced in a civil and structural consulting engineering practice in London where Maurice gained experience in a wide range of structures and tunnels carrying services and utilities beneath the River Thames. Following a period working with British Rail (LMR) Bridge Scheme Maurice worked with Fluor International (Holland) on a range of civil and structural engineering projects for the Saudi Arabian Gas and Oil Separation Programmes where Maurice was evolved as a project coordinator between the engineering groups.

Working closely within a professional multi-discipline engineering environment Maurice progressed from draughtsman, designer and engineer, to become a project manager on a range of programmes in the built environment. A wide range of practical experience as a Chartered Professional led Maurice to the position of Project Director leading project teams for major international companies and local authorities delivering blue chip programmes.

Within a project executive team, Maurice was engaged on complex projects ranging between propane tank farms and support facilities, clean rooms, major laboratory complexes, hazardous effluent and low toxic effluent separation and hotels. In this role Maurice instructed professional teams comprising Architects, Engineers, Safety and Construction Managers etc., prepared Protocol of Risk documentation, Waste Handling Policy and Waste Handling Systems etc. to accompany Statutory and Regulatory Submissions whilst delivering best value within a cost effective budget.

- ▶ Engaged as the local authority "Members" consultant in the role of "The Engineer" and "The Safety Consultant" Maurice prepared the business case and interfaced with "stakeholders" to deliver, in house, phased programmes of works including streetscape and infrastructure in compliance with development agency key indicators.
- ▶ Engaged as the Project Director he delivered building programmes associated with the following:
 - ▶ New agricultural research facility
 - ▶ Atomic Energy Authority research facility
 - ▶ New forensic science research facility
 - ▶ New food quality control laboratories
 - ▶ Pharmaceutical research facilities plus a site wide water mass balance for the separation of hazardous and low toxic effluent for compliant discharge to public sewer.

- ▶ Engaged as the “Delivery Agent” Maurice has obtained “Planning Consent” and is progressing implementation of a major hotel complex in Asia which duties include the submission of a full environmental impact assessment study in compliance with IMF standards and full construction and operational safety standards.
- ▶ Engaged as a safety specialist Maurice has prepared, implemented and monitored protocols for risk and COSHH assessments for fume cupboards and laboratory operations also dry chemical and red label stores, identifying all hazards and managing safe working practices.

These programmes demanded interrogation of working procedures for the protection of the public in the built environment, both during the construction and operational periods through a due process of awareness, review, training and correction.

Whilst working as a project director Maurice obtained (for RSW Partnership) BSI (ISO 9001), as a BSI first for integrated engineering and safe project delivery systems. Maurice has written QAS and EMS policies and procedures for corporate compliance and governance with particular emphasis on corporate policy development and implementation in respect of safe system and data management processes. These correction processes in respect of corporate manslaughter assist to mitigate liability and are delivered through a risk, threat and mitigation plan of work.

The mitigation of risk process encompassed the writing of a process manual specifically for safe working procedures, to guide corporate management through safe working practices for Health & Safety, Building Form and Function, Fire Strategy and Security. This document was acknowledged and signed off by RoSPA as a “fit for purpose” work stage procedure to provide guidance notes and governance in support of the following.

RoSPA Statement

“All those who design, build, own and manage buildings and public spaces have duties of care to ensure the safety of people, be they employees or members of the public. From preventing slips and trips or falls from height, to controlling the risks of Legionnaire’s disease, to preventing fire, managing asbestos or ensuring safe evacuation in an emergency, the challenges are extensive. With an increasing focus on corporate liability and the role of directors and senior managers, no organisation that has responsibilities for buildings can afford to be unclear about the expectations of the authorities or their liabilities under statute and common law. There is every possibility that UK law in this area will reach beyond our national boundaries in cases where UK citizens or organisations have caused death through a failure in their duty of care. To help clarify understanding in this key area, the Chartered Institute of Building, in partnership with RoSPA, is organising a special conference to examine the implications of safety law surrounding buildings, including the new Corporate Manslaughter Act and its implications for relevant professionals. Key perspectives covered will include those of health and safety authorities, emergency planners, directors, architects, designers, and insurers”.

RoSPA - CIOB / Maurice Webb FCIOB programme manager



Standards

An enthusiasm for working with the ISO family of documents has willingly drawn a comprehensive understanding of BS EN ISO 9001: 2000 (QMS), BS EN ISO 14001: 2004 (EMS), BS OHSAS 18001:2007 (HSMSS) and the system and processes of HS(G)65 and guides for measuring performance.

Supporting Business

Maurice has prepared and produced policy and procedures documentation for accreditation to QAS systems as necessary for inclusion into company manuals or commercial bid submissions.

Innovative specialist solutions

- ▶ Whole Body Monitor Room (Trace element radio active free lead construction, presented on “tomorrow’s world”).
- ▶ Environmental growth rooms (constant temperature).
- ▶ Fume Cupboards (written papers and articles) - Ventilated laboratory benching.
- ▶ IP 68 uplighter - Rail Guidance Lighting (Patent) providing illuminated specialist means of escape routes.

New Legislation Awareness

Maurice understands

- ▶ The impact of the new Corporate Manslaughter and Corporate Homicide Act (enforceable April 2008) and the steps needed to mitigate Health and Safety in the workplace enforcement against the controlling mind.
- ▶ Health and Safety drivers behind the Lord Young report.



Responsibilities

- ▶ Developing valuable, integrated solutions and propositions that meet identified client needs
- ▶ Design of projects to address client issues, assumptions and approaches
- ▶ Establishing project direction and approach to meet client needs
- ▶ Risk appraisal of business issues
- ▶ Influencing the senior client team and managing executive stakeholders
- ▶ Agreeing commercial terms for the team with the client
- ▶ Managing political barriers within Client organisation to facilitate successful project delivery

Actions

- ▶ Client project presentation and liaison
- ▶ Project control and user Interface on concurrent projects
- ▶ Project quality and safety plan management
- ▶ Leading and setting programme direction for teams of consultants
- ▶ Managing performance to budget and delivery targets

In-depth Knowledge and Practice

- ▶ Project process management
- ▶ Project team management (fee and agreement management)
- ▶ Quality and safety systems
- ▶ Design and engineering co-ordination
- ▶ Cost and supply chain management and control
- ▶ Performance and commissioning management to handover

Competencies

- ▶ Business case development and delivery
- ▶ Project and safe process management
- ▶ Change management implementation
- ▶ Team leadership and people management
- ▶ Stakeholder relationship management

Skills

- ▶ Boardroom presentation skills and etiquette
- ▶ Highly numerate and analytical (quantitative/ qualitative)
- ▶ Communication, leadership, mentoring and coaching skills
- ▶ Programme scoping, resourcing and pricing
- ▶ Commercial negotiations
- ▶ Facilitation and Influencing skills
- ▶ Innovative solutions-based design
- ▶ Programme structures and control (QAS Plan of Work / Prince 2)
- ▶ Document IT management process (MS office, 4Project and AutoCad)
- ▶ Resource allocation and pricing

Sector Experience

- ▶ New streetscape and infrastructure replacement and regeneration programmes (Local Authorities)
- ▶ Major laboratory and office complex rationalizations (food, agrochemical, petrochemical, nuclear, forensic)
- ▶ Petrochemical (bulk propane and butane tank farm; on shore – off shore loading)
- ▶ Pharmaceutical research and development complexes,
- ▶ Rail, bridge scheme LMR





Fisherman's Wharf – Current

- ▶ Development of a high throughput sea front restaurant to international standards
- ▶ New Builds and Infrastructure

Some specific duties (sample):

- ▶ Preparation of desktop studies to support the business case and funding
- ▶ Leading negotiations with local authority for new lease and permission to develop



Cinnamon Garden Hotel (Sri Lanka) – Current

- ▶ Development of 114 chalet hotel resort
- ▶ New Builds and Infrastructure

Specific Duties:

- ▶ Obtained full planning approval with environmental impact assessment study
- ▶ Preparing documentation for funding



Southend on Sea Borough Council – Period 2000 – current

Phased ‘Flag Ship’ redevelopment of the High Street and adjoining areas

- ▶ Working as part of the Regeneration Team and in liaison with Technical Services to replace existing paving, street furniture, lighting and cabling and provide pedestrianisation (some 13,000 m²)
- ▶ Co-ordination of Statutory Authorities and Regulatory Bodies to replace major gas main and relocate numerous buried services



General Duties - “The Engineer” and “The Safety Consultant” responsible for co-ordinating between Members, Technical Services, the professional consultants and contractors.

Some specific duties (sample):

- ▶ The preparation of the Business Case with solutions to meet budgetary and funding constraint
- ▶ Interfacing with the High Street Manager and retail managers and the public whilst delivering a phased and highly disruptive programme of works
- ▶ Gas main replacement, main sewer modifications and a cleansing of the foul and storm water sewers
- ▶ Decommissioning and removal of below ground structures
- ▶ Provision of new kiosks



Rank Hovis McDougal (Food) - Period 1995 – 2005

Phased development for Microbiology and Analytical Laboratories, Bakery and Offices

- ▶ New Builds and Remodelling of existing facilities and Infrastructure

Some specific Duties (sample):

- ▶ The preparation of the Business Case with solutions to meet budgetary and funding constraint
- ▶ Spatial Analysis and moves
- ▶ Ensuring compliance with regulatory standards



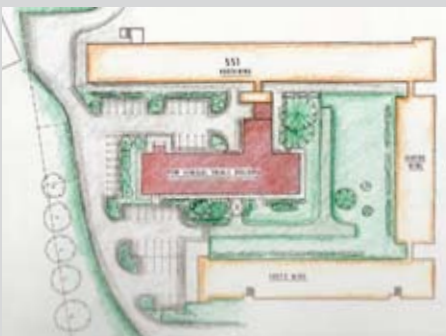
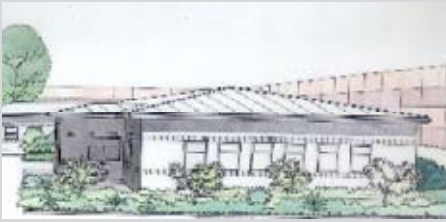
AEA Technology Plc - Period 1995 – 2000

Privatisation Programme encompassing some 15,000m² of specialist laboratory facilities

- ▶ New Build and Remodelling

Some specific Duties (sample):

- ▶ Working with the Company Architect, Scientists, Environmentalists (internal and external), Nuclear Industry Regulators, Estates Management Local Authority, Government Funding Regulators and Internal and External Auditors to rationalise the facilities at Harwell for privatisation
- ▶ Business plan justifications and user rental appraisals, decanting of operational personnel, protocol of risk documentation, major decommissioning and stripping out works (Classified Workers), major trade effluent and waste handling programme for the following laboratory complex facilities:
 - ▶ Health Physics Services
 - ▶ Bio Medical Research Complex
 - ▶ Clinical Trials Building
 - ▶ Animal Housing Facility
 - ▶ Animal Laboratories
 - ▶ Blood and Urine Analytical Laboratories



Forensic Laboratories - Period 1993 – 1997

Scheme for a Design and Build Implementation - 8,000m² of facilities

- ▶ 68 acre Green Field Site purchase with land exchange to develop a 34-acre site for the Home Office

Some specific Duties (sample):

- ▶ Negotiations (to purchase) with Land Owners, Solicitors, Agents, Government Bodies, NRA (relocated flood plain), British Rail (easement for foul sewer) and Local Authority to achieve Outline Planning in 13 weeks
- ▶ Infrastructure, Laboratories and Offices, Laboratories for Blood and Urine Analysis together with Facilities for security packaging and return of blood and urine sample collection kits





Dow Chemical Company Limited - Period 1985 – 1991 Development of Highly Sensitive 34-acre site Flag Ship European Research and Development Complex

- ▶ New Builds and Remodelling of existing facilities and Infrastructure.
- ▶ Enabling contracts (2) Main Contract (1) Finishing Contracts (5)

Specific Duties (sample):

- ▶ Leading the liaison between local MP, Local Authority and Parish Council for 5 Planning Submissions
- ▶ Highly specialist Environmental Impact Assessments pollution solutions including the onsite relocation of 35,000m³ of excavated sub soils; HSE and EO submissions
- ▶ Extensive Designs of Laboratories and Offices Preparation of Protocol of Risk documentation
- ▶ Preparation of Waste Handling Policy, Design of Waste Handling Systems, Regulatory Submissions and Approvals



SmithKline Beecham, Harlow - period 1997 – 2000 Feasibility Study for a new 3,800m² High Throughput Screening Robotics Facility

Other Major Environmental Projects

- ▶ Full design and Management brief for the Separation of Hazardous and Low Toxic Effluent at two major locations following a full water/effluent mass balance. The provision of storage tanks and preparation of effluent for incineration or discharge to sewer

Specific Duties:

- ▶ Working with executive management to provide ergonomic and operational layouts with full spatial analysis compliant with industry standards and local authority requirements. The facilities included
 - ▶ Biology and Cell Culture Laboratories
 - ▶ Screening and Compound Processing
 - ▶ Automated Compound Store
 - ▶ Robotics Laboratory
 - ▶ NMR Laboratory
 - ▶ Analytical QC
 - ▶ Offices, Access and Circulation
 - ▶ Plant Room
 - ▶ Stores and Infrastructure



"The bitterness of poor quality remains long after the sweetness of low price is forgotten"